

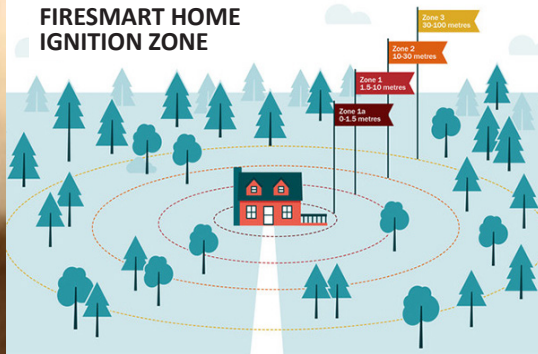
FireSmart™ for Homeowners

Every year, wildfires threaten homes and force the evacuation of many British Columbians. You can play a crucial role in reducing the wildfire threats to your community by learning more about FireSmart.

FireSmart is a nationally recognized program designed to reduce wildfire risks by making homes and communities more fire-resilient. FireSmart principles have been shown to reduce the impact of wildfires on rural and urban properties, even under the most extreme fire conditions.

Reducing wildfire threats is a shared responsibility. Do your part by learning about “Priority Zones” and how changes made to your home and the surrounding area have the greatest impact on protecting your property from wildfires.

FIRESMART HOME IGNITION ZONE



Learn what you can do to make your property and your community more fire-resilient.

You may be eligible for a Homeowner's Grant of up to \$500!

Book your FREE FireSmart Assessment now to learn how you can protect your property from wildfires. Contact your local FireSmart Coordinator through the information below:



250-615-6100

1-800-663-3208

Planning@rdks.bc.ca

For more information, visit

www.firesmart.ca

www.firesmartcanada.ca

To report a wildfire
call 1-800-663-5555
or dial *5555 from a cell phone



Regional District of
Kitimat-Stikine



BRITISH COLUMBIA
FireSmart™
Northwest BC

FireSmart™
Assessments are
now in **YOUR**
neighborhood!



Regional District of
Kitimat-Stikine

HOW WILDFIRES SPREAD

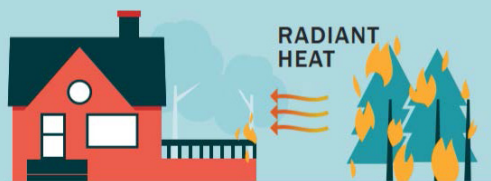
SPARKS/EMBERS

This is the burning debris that can be thrown up to two kilometres ahead of a wildfire. Sparks and embers can ignite materials on or near your home causing severe damage.



RADIANT HEAT

Radiant heat from a wildfire can melt vinyl siding, ignite your home and even break windows. Extreme heat can come from flames within 30 metres of your home.



DIRECT FLAME

As wildfires spread towards homes, they ignite other flammable objects in their path. To stop fire from directly affecting your home, create breaks in this path, especially closest to your home.



WHAT YOU CAN DO!



FireSmart™ Your Property

Request a free FireSmart home assessment

Check Your Structures

Roof: ensure they are fire resistant or fire retardant

Chimneys: install a spark arrestor

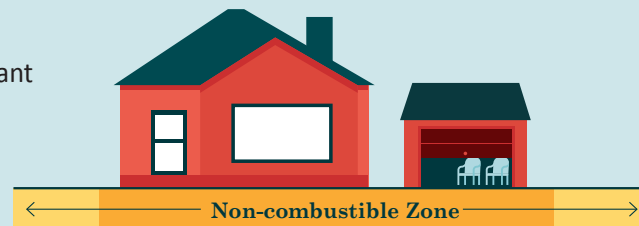
Doors: ensure they are fire rated

Remove the Fuel

Clean up the area 10 metres around your home;

Make this a fire-resistant zone, free of all materials that could easily ignite from a wildfire including conifers, surface fuels, firewood, and recreational vehicles;

Prune all tree branches with 2 metres off the ground.



Be Prepared

Have shovels, an axe, rake, sprinkler, hoses and ladders available to assist in suppressing wildfires;

Have your house number clearly marked so emergency vehicles can locate you.

HOW WILDFIRES GROW

TREES

Coniferous trees are highly flammable. Deciduous (leafy) trees are much less flammable.

SURFACE FUELS

Plants, leaves, twigs, wood piles and dried grasses are surface fuels.

STRUCTURES

Building materials include: wood shakes, wood vinyl siding, wooden fences attached to homes.

